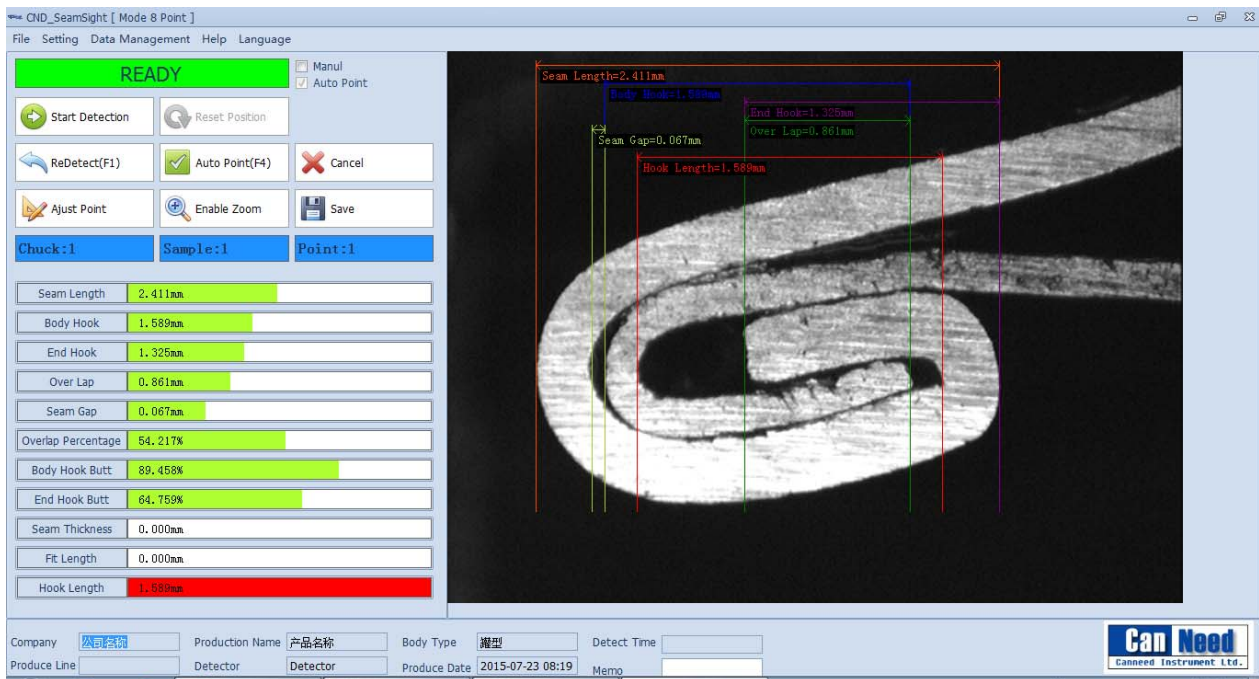


# SeamSight<sup>®</sup>-S-10

## Super Full Automatic Seam Monitor



(Automatic can cutting and measurement)



**Full Automatic Seam Measurement System with a  
combination of automatic can cutter and can tester**

- Easy-to-use,  
safer,  
low noise.
- Higher efficiency,  
auto can cutting,  
auto measurement.
- Reliable,  
durable,  
minimal maintenance.
- Higher accuracy,  
avoiding human error.

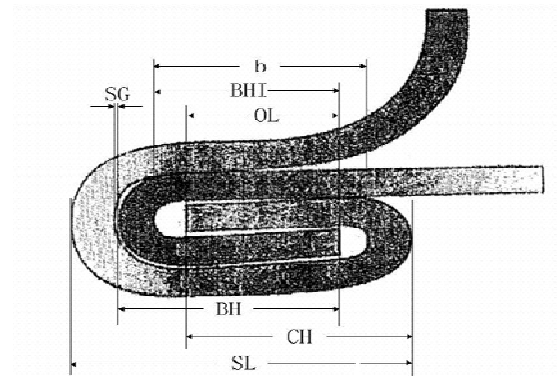
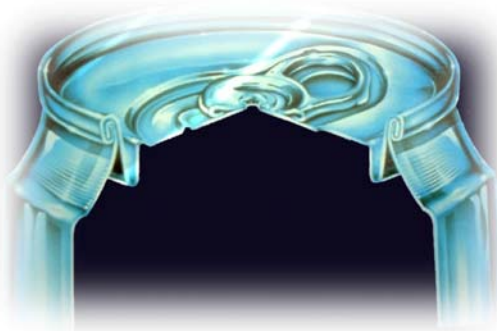
## Are you still using the old-fashioned method of manual can cutting to perform measurements on seam?



Advanced method: a combination of can cutter and can tester



Old-fashioned manual can cutting measurement



Picture 1 Dimensions of a seam

### Features:

1. Has applied for and been granted a number of patents for inventions;
2. Innovative invention of automatic can cutting and measurement seam monitor to replace the old manual can cutting measurement;
3. Innovative design enables the gauge to perform measurements on seam with minimal effort or operator intervention. The operator only needs to put in and take out the empty can samples.
4. Extreme safety and avoids the risk of injury resulted from manual can cutting;
5. High efficiency and auto finishing the whole measurement process;
6. Low noise;
7. High precision, clear display, equipped with the advanced Golden Lens<sup>®</sup> video capture device;
8. Repeatable and accurate measurement, adopting the auto cutting method to ensure a clear-cut cross-section without deformation or burrs;
9. Simple, easy-to-use operation;
10. Stable performance and the seam saw made of hard metal alloy is durable;

11. Easy maintenance, drawer type cleaning of iron chippings and shavings, minimal care and maintenance;
12. The client chooses the proper can type along with the order, and chooses one from the following can types:  
113, 202, 206, 209;
13. Chuck number correlation of test data.

### **Operation Method:**

1. Empty the contents from the sample can; rinse the can with clean water and dry the can;
2. Put the can in and close the cover;
3. Start the software, to finish auto cutting and measuring three sections;
4. Take out the can.

### **SeamSight®-S-10 Super Full Automatic Seam Monitor, consisting of:**

1. SeamSight-S-10 Super Full Automatic Seam Monitor
2. CND\_SeamSight-S 1.0, Full automatic seam measuring software
3. SeamSight-S-CAL, Calibration piece 2mm
4. 80mm Hard metal alloy seam saws, 2 pc

### **Recommending to purchase the following item to ensure the seam monitor working**

5. Computer

### **Optional for higher efficiency:**

6. STG-200-D Seam Thickness Gauge (digital)
7. CSG-200S Countersink Gauge (with data output button)
8. TRC-200 Transporter of Computer
9. CMDI Mitutoyo data line (2 pieces)

### **Measurement process of actual seam thickness and countersink:**

Before cutting the sample cans, use STG-200-D Seam Thickness Gauge to measure the seam thickness, use CSG-200 Countersink Gauge to measure countersink, data will be transmitted via the data lines, and seam thickness and countersink data are collected automatically to generate reports.



## Technical Data:

Automatic can cutting, automatic measurement; auto collect countersink digital indicator data; ignore the interference of outer light sources; SPC data output; 5 optional formulae for seaming overlapped rate calculating; customizable report format; Resolution 0.001mm, Precision 0.005mm, Magnification factor: 60 ×, Line positioning magnification factor: 180 ×.

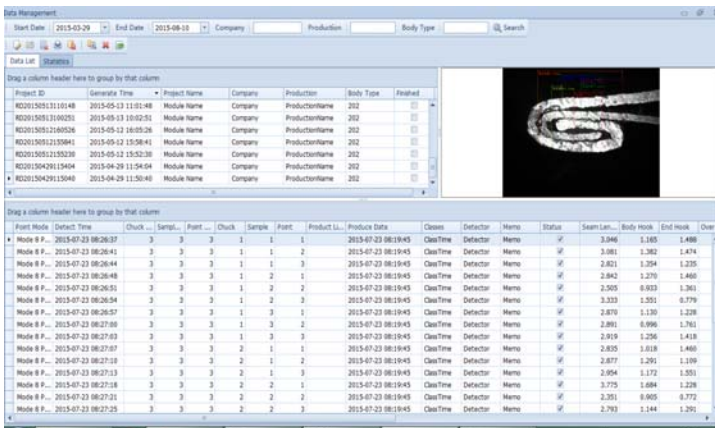
## Features:

- 1) Automatic can cutting and measurement, efficient and accurate;
- 2) Equipped with Golden Lens<sup>®</sup> video capture device which interference-free of external light source and ensured the high image definition;
- 3) SPC compatible, use a data adapter to collect the data from Mitutoyo Digital Indicator (Actual Seam Thickness; Actual countersink);
- 4) There are 5 calculation formulae of Overlap Rate for clients to choose;
- 5) Resolution: 0.001mm, Precision: 0.005 mm, Magnification factor: 60 ×, Line positioning magnification factor: 180 ×;
- 6) Magnifier option enable users to magnify the testing image for a more accurate line positioning
- 7) The Anti-noise Seam Saw can be chosen, help protect your hearing;
- 8) Report format can be customized, flexible for different report styles of different companies;
- 9) 12 Measuring Items: Tightness, Seam Length, Body Hook Length, End Hook Length, Overlap, Seam gap, Overlap rate, Body Hook lapping rate, End Hook lapping rate, On-screen Seam Thickness; Length of Tightness; Actual Seam Thickness; Actual countersink;
- 10) Software adopted data base management system, measurement results and images saved in the data base;
- 11) Users can review or re-measure the saved projects at any time;
- 12) Graph chart statistic function, automatically analyze and compare the measurement results;
- 13) Data can be exported as an Excel file;
- 14) Predefine various qualification standards, auto judge and warn whether the results are qualified in every measure;
- 15) Measurement results and label lines mark directly on the image, results will also display in corresponding field on the screen;
- 16) Seam image can be printed, stored, no need to retain the sample cans;
- 17) Provide with calibration piece, calibrate at any time;
- 18) Use the monochromatic source, make it much more durable.

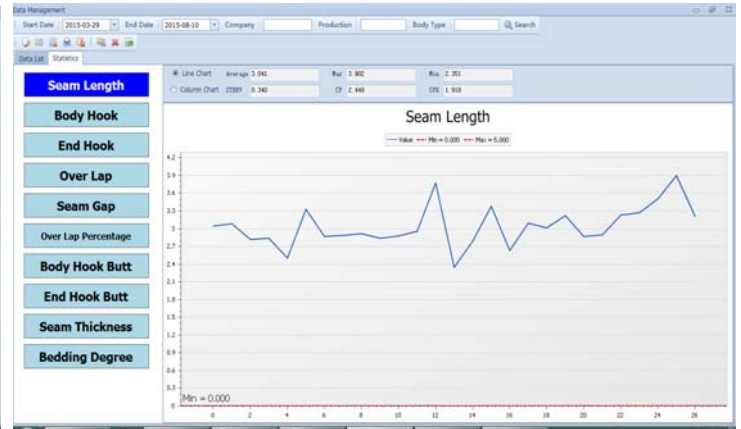
# CND-Seam Sight<sup>®</sup> -S 1.0 Software

With the most advanced function: 5 optional formulae for seaming overlapped rate calculating.

Professional seam measuring software (data base management system) with which SPC data statistics and analysis function and SPC data output interface.



Project ID	Generate Time	Project Name	Company	Production	Body Type	Finished
K2015051110148	2015-05-11 10:14:48	Module Name	Company	ProductionName	202	
K2015051110201	2015-05-11 10:20:01	Module Name	Company	ProductionName	202	
K2015051110206	2015-05-11 10:20:06	Module Name	Company	ProductionName	202	
K2015051110204	2015-05-11 10:20:04	Module Name	Company	ProductionName	202	
K2015051110203	2015-05-11 10:20:03	Module Name	Company	ProductionName	202	
K2015042911304	2015-04-29 11:30:40	Module Name	Company	ProductionName	202	



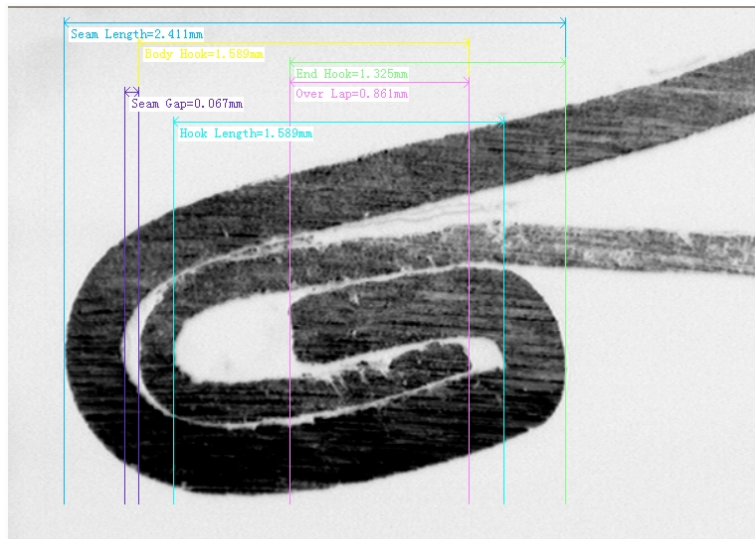
Measurement results and images saved in the data base management system. Convenient for overview and recheck.

Various statistics charts analyze the products quality automatically.

## User-defined report, accord with your own requirement

Image Report (also can be printed in reversed colors)







SeamSight Image Report



Company Name :	Company	Seam Length :	2.411	mm
Production Name :	ProductionName	Body Hook :	1.589	mm
Body Type :	202	End Hook :	1.325	mm
Product Name :	2015-07-23 8:19:45	Over Lap :	0.861	mm
Detect Date :	2015-07-23 8:26:37	Seam Gap :	0.067	mm
Product Line :		Over Lap Percentage :	49.296	%
Detector :	Detector	Body Hook But :	73.944	%
Chuck :	1	End Hook But :	75.352	%
Sample :	1	Seam Thickness :	0.000	mm
Point :	1	Counter Sink :	2.500	mm
Detect Mode :	Mode 8 Point	Fit Length :	2.500	mm
Memo :	Memo	Hook Length :	0.000	mm



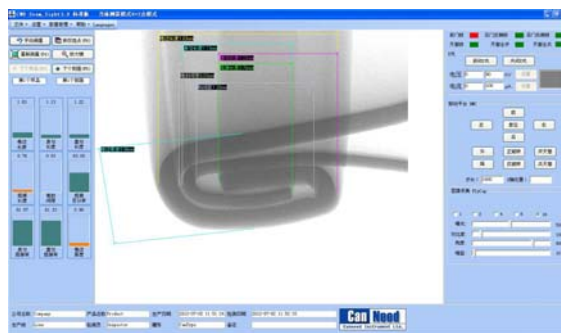
## Seam Monitor Development History

1st Generation	2nd Generation	3rd Generation
Dial Gauge	Digital data displaying	Manual Line positioning
 <p><b>VSM-H</b> Dial gauge, Manual recording and calculating</p>	 <p><b>VSM II</b> Digital data displaying, Manual recording and calculating</p>	 <p><b>VSM6A</b> Manual Line positioning, Auto calculating</p>
4th Generation	5th Generation	6th Generation
Auto Line positioning and data collection, interference-free of external light source	Auto can cutting, auto measurement	Non-destructive, X-ray measurement
 <p><b>Seam Sight® Full Automatic Seam Monitor</b> Auto Line positioning, calculating and data collection, Ignore the interference of outer light sources</p>	 <p><b>SeamSight®-S-10</b> <b>Super Full Automatic Seam Monitor</b> (A combination of can cutter and can tester)</p>	 <p><b>Seam-X-Lab Automatic Seam Scanner</b></p>

## You Need, We Can!

We try our best, to meet customers' needs!

We seek for continuous innovation, according to our customers' demands!



Seam-X-Lab Automatic Seam Scanner (Non-destructive)

CanNeed Instrument Ltd (Hong Kong, Zhaoqing, Dongguan, Shanghai, Wuhai)  
Tel: 0758-2788469, Fax: 0758-2782729, Email: [info@canneed.com](mailto:info@canneed.com), [www.canneed.com](http://www.canneed.com)